

# SPECIFICATIONS

U.S. standard sheet gauge to 7 gauge. Dimensions in inches. Weights in pounds. WR<sup>2</sup> in lb.-ft.<sup>2</sup>.

## WHEEL SPECIFICATIONS

Size	Aluminum		Steel	
	Wt.	WR <sup>2</sup>	Wt.	WR <sup>2</sup>
1403	10.1	0.96	19.7	2.74
1404	8.5	1.43	18.0	3.04
1406	11.7	2.40	20.5	3.46
1503	10.8	1.23	21.8	3.59
1504	8.8	1.69	19.0	3.68
1506, 1508	11.8	2.40	21.5	4.16
1603	11.5	1.53	23.9	4.56
1604	9.0	1.98	20.0	4.41
1606, 1608	12.1	2.50	23.0	5.07
1703	12.3	1.93	26.3	5.79
1704	9.3	2.30	21.0	5.22
1706, 1708	12.2	2.60	24.5	6.09
1803	13.0	2.36	28.6	7.16
1804	9.5	2.65	22.0	6.13
1806, 1808	12.4	2.60	26.0	7.25
1903	14.2	2.92	31.1	8.42
1904, 1906	12.0	3.73	29.5	9.16
1908, 1910	15.1	5.10	34.5	10.72
1912	12.9	5.07	32.8	10.15
2003	15.1	5.02	33.7	10.23
2004, 2006	12.3	4.22	31.0	10.67
2008, 2010	15.3	5.20	36.5	12.56
2012	13.1	5.21	36.1	12.37
2103	16.0	4.24	36.5	12.31
2104, 2106	12.5	4.74	32.5	12.33
2108, 2110	15.5	5.30	38.0	14.42
2112	13.3	5.34	39.4	14.91
2203	17.1	5.02	39.3	14.70
2204, 2206	12.8	5.31	34.0	14.16
2208, 2210	15.6	5.40	40.0	16.66
2212	13.5	5.48	42.9	17.80
2303	18.3	6.07	49.4	20.83
2304	19.8	6.50	52.5	22.27
2306, 2308	18.5	8.42	45.0	20.93
2310, 2312	21.7	10.60	53.5	24.35
2403	19.4	7.16	53.1	24.50
2404	20.9	7.80	56.4	26.14
2406, 2408	18.8	9.29	48.0	23.79
2410, 2412	21.9	10.80	56.0	27.75
2503	20.5	8.33	56.9	28.64
2504	22.0	9.00	60.4	30.49
2506, 2508	19.0	10.22	50.0	26.89
2510, 2512	21.9	11.00	58.5	31.46
2603	21.8	9.63	60.9	33.27
2604	23.1	10.30	64.5	35.36
2606, 2608	19.3	11.20	52.0	30.24
2610, 2612	22.3	11.20	61.0	35.48

## MATERIAL SPECIFICATIONS

HOUSING				
Wheel diameter	Sides	Scroll	Inlet plate	Drive plate
14-18	10	10	1/4	10
19-22	10	10	1/4	10
23-26	10	10	1/4	10

SHAFT DIAMETER				
Wheel diameter	Arrangement 1		Arrangement 8	
	Standard	Heat Fan with Shaft Seal	Standard	Heat Fan with Shaft Seal
14-18	1 <sup>7</sup> / <sub>16</sub>	1 <sup>7</sup> / <sub>16</sub>	1 <sup>7</sup> / <sub>16</sub>	1 <sup>7</sup> / <sub>16</sub>
19-22	1 <sup>7</sup> / <sub>16</sub>	1 <sup>11</sup> / <sub>16</sub>	1 <sup>7</sup> / <sub>16</sub>	1 <sup>7</sup> / <sub>16</sub>
23-26	1 <sup>11</sup> / <sub>16</sub>	1 <sup>15</sup> / <sub>16</sub> †	1 <sup>7</sup> / <sub>16</sub>	1 <sup>11</sup> / <sub>16</sub>

SHAFT DIAMETER				
Wheel diameter	Arrangement 9		Arrangement 10	
	Standard	Heat Fan with Shaft Seal	Standard	Heat Fan
14-18	1 <sup>7</sup> / <sub>16</sub>	1 <sup>7</sup> / <sub>16</sub>	1 <sup>7</sup> / <sub>16</sub>	1 <sup>7</sup> / <sub>16</sub>
19-22	1 <sup>11</sup> / <sub>16</sub>	1 <sup>11</sup> / <sub>16</sub>	1 <sup>7</sup> / <sub>16</sub>	1 <sup>7</sup> / <sub>16</sub>
23-26	1 <sup>15</sup> / <sub>16</sub>	1 <sup>15</sup> / <sub>16</sub>	1 <sup>11</sup> / <sub>16</sub>	1 <sup>11</sup> / <sub>16</sub>

BEARINGS*				
Wheel diameter	Arrangement 1/9		Arrangement 8	Arrangement 10
	Inboard	Outboard		
14-18	A	A‡	A	A
19-22	B	B	A	B
23-26	C	B‡	A	B

A-200 Series ball bearing. B-22400 Series roller bearing.  
C-300 Series ball bearing.

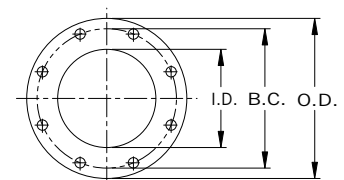
\*nyb reserves the right to substitute bearings of equal rating.

‡ Fans with heat fan construction and shaft seal:

Arr. 1: Sizes 23-26 include a shaft turndown at the outboard bearing, with a bearing size of 1<sup>11</sup>/<sub>16</sub>". Inboard bearing size is 1<sup>15</sup>/<sub>16</sub>".

Arr. 9: Sizes 14-18 include a Type B outboard bearing, in lieu of the standard Type

FLANGE				
DIMENSIONS [INCHES]				
Size	I.D.	O.D.	Bolt circle	Holes† No. - size
03	3	7 <sup>1</sup> / <sub>2</sub>	6	4 - 3/4"
04	4	9	7 <sup>1</sup> / <sub>2</sub>	8 - 3/4"
05	5	10	8 <sup>1</sup> / <sub>2</sub>	8 - 7/8"
06	6	11	9 <sup>1</sup> / <sub>2</sub>	8 - 7/8"
08	8	13 <sup>1</sup> / <sub>2</sub>	11 <sup>3</sup> / <sub>4</sub>	8 - 7/8"
10	10	16	14 <sup>1</sup> / <sub>4</sub>	12 - 1"
12	12	19	17	12 - 1"



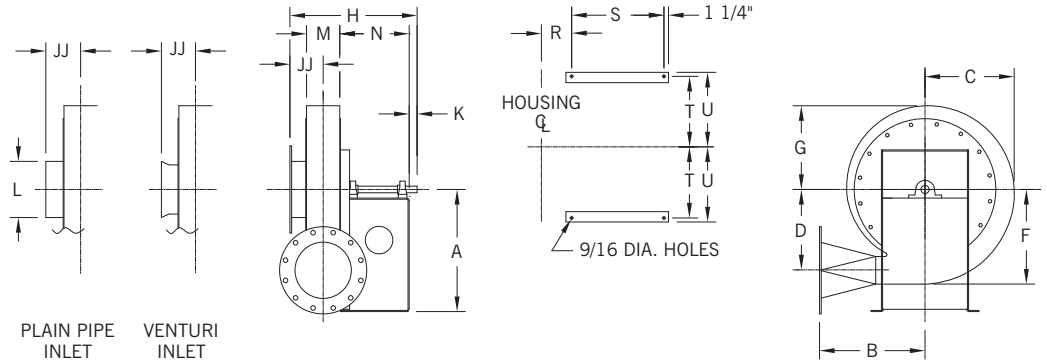
† Holes straddle centerline. ANSI Class 125/150 hole pattern. Flange thickness 3/8"

**ARRANGEMENTS**

**1/9**

**PRESSURE BLOWERS**

Maximum Airstream Temperature:  
 200°F. – aluminum wheel.  
 300°F. – steel wheel.  
 600°F. – heat fan.

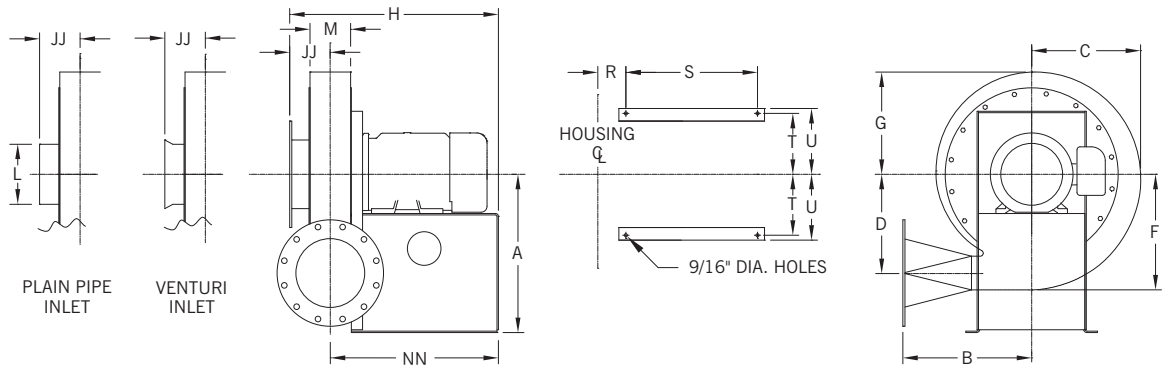


**ARRANGEMENT**

**4**

**PRESSURE BLOWERS**

Maximum Airstream Temperature:  
 180°F.

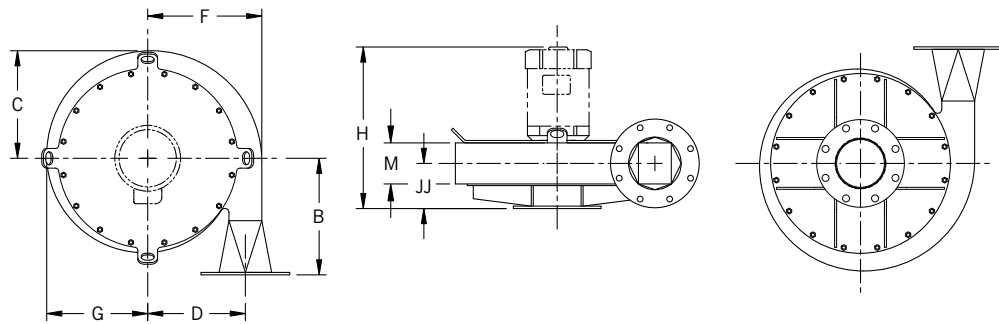


**ARRANGEMENT**

**4-V**

**PRESSURE BLOWERS**

Maximum Airstream Temperature:  
 120°F.

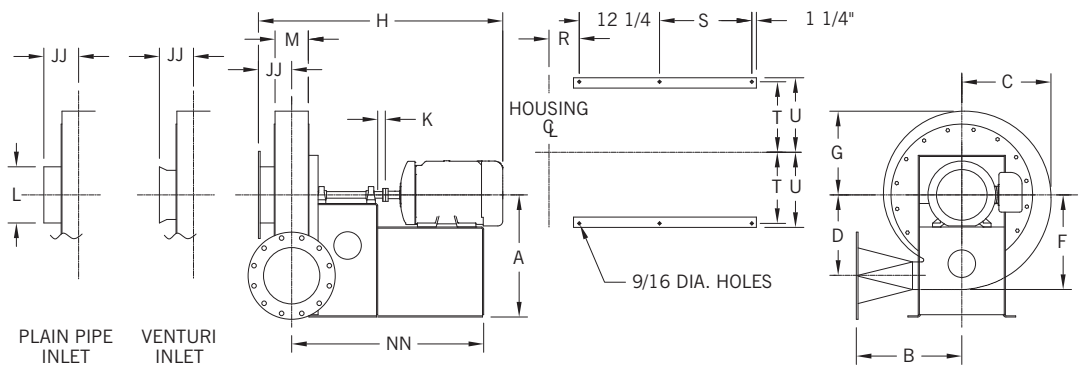


**ARRANGEMENT**

**8**

**PRESSURE BLOWERS**

Maximum Airstream Temperature:  
 200°F. – aluminum wheel.  
 300°F. – steel wheel.  
 600°F. – heat fan.

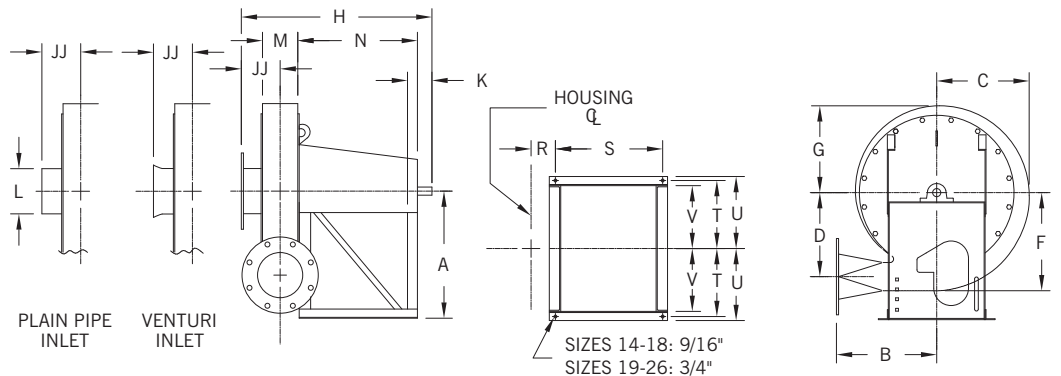


**ARRANGEMENT**

**10**

**PRESSURE BLOWERS**

Maximum Airstream Temperature:  
 200°F. – aluminum wheel.  
 300°F. – steel wheel.  
 600°F. – heat fan.



# ARRANGEMENTS 1, 4, 4-V, 8, 9, 10

Dimensions not to be used for construction unless certified. Bare fan weight does not include wheel or motor. Weights in pounds. Wheel weights on page 11.

## HOUSING DIMENSIONS [INCHES]

Fan Size	Outlet Size	Inlet Size	B	C	D	F	G	M	JJ [Inlet types]			L
									Flanged	Plain pipe	Venturi	
14-18	03	05	18 <sup>1</sup> / <sub>4</sub>	13 <sup>5</sup> / <sub>8</sub>	11 <sup>3</sup> / <sub>4</sub>	14 <sup>3</sup> / <sub>8</sub>	12 <sup>3</sup> / <sub>4</sub>	27/8	5 <sup>1</sup> / <sub>16</sub>	4 <sup>11</sup> / <sub>16</sub>	4 <sup>9</sup> / <sub>16</sub>	5 <sup>9</sup> / <sub>16</sub>
	04	06						37/8	5 <sup>9</sup> / <sub>16</sub>	5 <sup>3</sup> / <sub>16</sub>	4 <sup>13</sup> / <sub>16</sub>	6 <sup>5</sup> / <sub>8</sub>
	06	08						6 <sup>1</sup> / <sub>4</sub>	6 <sup>3</sup> / <sub>4</sub>	6 <sup>3</sup> / <sub>8</sub>	6 <sup>3</sup> / <sub>8</sub>	8 <sup>5</sup> / <sub>8</sub>
	08	08						6 <sup>1</sup> / <sub>4</sub>	6 <sup>3</sup> / <sub>4</sub>	6 <sup>3</sup> / <sub>8</sub>	6 <sup>3</sup> / <sub>8</sub>	8 <sup>5</sup> / <sub>8</sub>
19-22	03	05	17 <sup>3</sup> / <sub>4</sub>	16 <sup>1</sup> / <sub>2</sub>	14 <sup>7</sup> / <sub>8</sub>	17 <sup>1</sup> / <sub>2</sub>	15 <sup>1</sup> / <sub>2</sub>	27/8	5 <sup>9</sup> / <sub>16</sub>	5 <sup>3</sup> / <sub>16</sub>	5 <sup>3</sup> / <sub>16</sub>	5 <sup>9</sup> / <sub>16</sub>
	04	06						37/8	6 <sup>1</sup> / <sub>16</sub>	5 <sup>11</sup> / <sub>16</sub>	5 <sup>5</sup> / <sub>16</sub>	6 <sup>5</sup> / <sub>8</sub>
	06	06						6 <sup>1</sup> / <sub>4</sub>	6 <sup>3</sup> / <sub>4</sub>	6 <sup>3</sup> / <sub>8</sub>	6 <sup>3</sup> / <sub>8</sub>	8 <sup>5</sup> / <sub>8</sub>
	08	08						6 <sup>1</sup> / <sub>4</sub>	6 <sup>3</sup> / <sub>4</sub>	6 <sup>3</sup> / <sub>8</sub>	6 <sup>3</sup> / <sub>8</sub>	8 <sup>5</sup> / <sub>8</sub>
	10	10	21 <sup>3</sup> / <sub>4</sub>	7 <sup>1</sup> / <sub>4</sub>	7 <sup>1</sup> / <sub>4</sub>	6 <sup>7</sup> / <sub>8</sub>	6 <sup>7</sup> / <sub>8</sub>	10 <sup>3</sup> / <sub>4</sub>				
12	12	23	14 <sup>1</sup> / <sub>2</sub>	7 <sup>1</sup> / <sub>4</sub>	6 <sup>7</sup> / <sub>8</sub>	6 <sup>7</sup> / <sub>8</sub>	10 <sup>3</sup> / <sub>4</sub>					
23-26	03	05	19	19 <sup>1</sup> / <sub>2</sub>	17 <sup>5</sup> / <sub>8</sub>	20 <sup>5</sup> / <sub>8</sub>	18 <sup>1</sup> / <sub>4</sub>	3 <sup>5</sup> / <sub>8</sub>	6 <sup>5</sup> / <sub>16</sub>	5 <sup>15</sup> / <sub>16</sub>	5 <sup>9</sup> / <sub>16</sub>	5 <sup>9</sup> / <sub>16</sub>
	04	06						5	7	6 <sup>5</sup> / <sub>8</sub>	6 <sup>5</sup> / <sub>8</sub>	6 <sup>5</sup> / <sub>8</sub>
	06	08						5	7	6 <sup>5</sup> / <sub>8</sub>	6 <sup>5</sup> / <sub>8</sub>	8 <sup>5</sup> / <sub>8</sub>
	08	08						5	7	6 <sup>5</sup> / <sub>8</sub>	6 <sup>5</sup> / <sub>8</sub>	8 <sup>5</sup> / <sub>8</sub>
	10	10	23	7 <sup>1</sup> / <sub>4</sub>	7 <sup>1</sup> / <sub>4</sub>	6 <sup>7</sup> / <sub>8</sub>	6 <sup>7</sup> / <sub>8</sub>	10 <sup>3</sup> / <sub>4</sub>				
12	12	23	7 <sup>1</sup> / <sub>4</sub>	7 <sup>1</sup> / <sub>4</sub>	6 <sup>7</sup> / <sub>8</sub>	6 <sup>7</sup> / <sub>8</sub>	10 <sup>3</sup> / <sub>4</sub>					

## BARE FAN WEIGHTS AND MOTOR LIMITATIONS

Tolerance: ± 1/8"

Fan Size	Outlet Size	Inlet Size	Arr. 1 Wt.	Motor Frame Size (Arr. 4, 8)	Weight		Motor Frame Size	Weight	Fan Size	Outlet Size	Arr. 9		Arr. 10			
					Arr. 4	Arr. 8					Pedestal Number	Weight	Weight	Max. Motor Size		
										ODP	TEFC	C-NW				
14-18	03	05	200	143T-145T	145	285	182TC-184TC	120	14-18	03	1	190	220	215T	215T	16 <sup>5</sup> / <sub>8</sub>
				182T-184T	170	182TC-184TC	130	2			225					
	04	06	205	143T-145T	150	295	182TC-184TC	130			3	260				
				182T-184T	175	182TC-184TC	135	4			300					
15-18	06	08	220	143T-145T	165	300	182TC-184TC	135	19-22	04	1	195	230	215T	215T	16 <sup>5</sup> / <sub>8</sub>
				182T-184T	190	213TC-215TC	145	2			235					
				213T-215T	305	213TC-215TC	145	3			265					
19-22	08	08	220	182T-184T	190	310	182TC-184TC	145	19-22	06,08	4	305	245	256T	254T	18 <sup>5</sup> / <sub>8</sub>
				213T-215T	315	213TC-215TC	160	1			210					
				143T-145T	235	370	182TC-184TC	170			2	250				
	03	05	270	235	182T-184T	375	182TC-184TC	160	19-22	03	3	280	290	256T	254T	18 <sup>5</sup> / <sub>8</sub>
					213T-215T	380	213TC-215TC	170			4	325				
					143T-145T	245	385	182TC-184TC			175	5				
	04	06	275	245	182T-184T	385	182TC-184TC	170	19-22	03	6	300	290	256T	254T	18 <sup>5</sup> / <sub>8</sub>
					213T-215T	390	213TC-215TC	175			7	340				
					143T-145T	245	390	182TC-184TC			190	8				
	06	06	275	245	182T-184T	395	213TC-215TC	175	19-22	03	9	370	290	256T	254T	18 <sup>5</sup> / <sub>8</sub>
					213T-215T	410	182TC-184TC	190			5	295				
					182T-184T	260	415	213TC-215TC			190	6				
08	08	290	260	213T-215T	415	213TC-215TC	190	19-22	04,06	7	355	305	256T	254T	18 <sup>5</sup> / <sub>8</sub>	
				254T-256T	290	430	254TC-256TC			190	8					375
				213T-215T	270	415	213TC-215TC			190	9					385
10	10	300	300	254T-256T	430	254TC-256TC	190	19-22	04,06	5	315	305	256T	254T	18 <sup>5</sup> / <sub>8</sub>	
				284TS-286TS	300	430	284TSC-286TSC			190	6					335
				254T-256T	320	445	254TC-256TC			215	7					375
12	12	320	320	284T-286T	455	284TSC-286TSC	215	19-22	08,10	8	395	325	256T	254T	18 <sup>5</sup> / <sub>8</sub>	
				324TS-326TS	345	460	324TSC-326TSC			215	9					405
				254T-256T	270	435	182TC-184TC			205	5					340
03	05	330	270	213T-215T	445	213TC-215TC	205	19-22	12	6	360	350	256T	254T	18 <sup>5</sup> / <sub>8</sub>	
				254T-256T	300	460	254TC-256TC			230	7					405
				182T-184T	275	465	182TC-184TC			230	8					420
04	06	350	275	213T-215T	470	213TC-215TC	230	19-22	12	9	430	350	256T	254T	18 <sup>5</sup> / <sub>8</sub>	
				254T-256T	300	490	254TC-256TC			230	5					340
				182T-184T	285	460	182TC-184TC			230	6					360
06	08	365	285	213T-215T	465	213TC-215TC	230	19-22	03,04	7	405	355	256T	254T	18 <sup>5</sup> / <sub>8</sub>	
				254T-256T	315	485	254TC-256TC			230	8					420
				182T-184T	290	475	213TC-215TC			235	9					430
08	08	365	290	213T-215T	475	213TC-215TC	235	19-22	03,04	10	435	355	256T	254T	18 <sup>5</sup> / <sub>8</sub>	
				254T-256T	315	485	254TC-256TC			235	11					455
				182T-184T	285	460	182TC-184TC			235	12					465
10	10	385	335	213T-215T	495	254TC-256TC	235	19-22	06,08	13	550	360	256T	254T	18 <sup>5</sup> / <sub>8</sub>	
				254T-256T	320	495	284TSC-286TSC			255	10					440
				284TS-286TS	320	495	284TSC-286TSC			255	11					460
12	12	395	360	254T-256T	500	254TC-256TC	255	19-22	10,12	12	470	375	256T	254T	18 <sup>5</sup> / <sub>8</sub>	
				284TS-286TS	360	505	284TSC-286TSC			255	10					460
				324TS-326TS	345	515	284TSC-286TSC			265	11					480
				324TS-326TS	370	520	324TSC-326TSC	265								

N/A: Not Available due to motor shaft/wheel fit.

Tolerance: ± 1/8"

# ARRANGEMENTS 4, 4-V, 8

Dimensions not to be used for construction unless certified. Note: See page 12 for dimensional drawings.

Wheel dia.	Outlet Size	Inlet flange	Arr. 4 & 8 Motor Frame Size	A		H*		Arr. 4-V Motor Frame Size	H*	K	NN		R	S		T		U					
				Arr. 4	Arr. 8†	Arr. 4	Arr. 8				Arr. 4	Arr. 8		Arr. 4	Arr. 8	Arr. 4	Arr. 8	Arr. 4	Arr. 8	Arr. 4	Arr. 8		
14-18	03	05	143T-145T	17¾	19½	18	38	182TC-184TC	20%	3%	12 <sup>15</sup> / <sub>16</sub>	31 <sup>5</sup> / <sub>16</sub>	21 <sup>3</sup> / <sub>16</sub>	8 <sup>5</sup> / <sub>8</sub>	15	8 <sup>7</sup> / <sub>8</sub>	9 <sup>1</sup> / <sub>8</sub>	9 <sup>3</sup> / <sub>4</sub>	10				
			182T-184T	19		23½	40%							17 <sup>13</sup> / <sub>16</sub>	32 <sup>13</sup> / <sub>16</sub>					14 <sup>1</sup> / <sub>8</sub>	16½		
	04	06	143T-145T	17¾		19	39	182TC-184TC	21%		13 <sup>7</sup> / <sub>16</sub>	31 <sup>13</sup> / <sub>16</sub>	35 <sup>1</sup> / <sub>16</sub>	8 <sup>5</sup> / <sub>8</sub>	15								
			182T-184T	19		24½	41%				18 <sup>5</sup> / <sub>16</sub>	33 <sup>5</sup> / <sub>16</sub>		14 <sup>1</sup> / <sub>8</sub>	16½								
	06	08	143T-145T	17¾		21¾	41¾	182TC-184TC	24¼		14 <sup>5</sup> / <sub>8</sub>	33	4½	8 <sup>5</sup> / <sub>8</sub>	15								
			182T-184T	19		26 <sup>7</sup> / <sub>8</sub>	44				20 <sup>1</sup> / <sub>8</sub>	34½		14 <sup>1</sup> / <sub>8</sub>	16½								
		213T-215T	19¾	46 <sup>5</sup> / <sub>8</sub>	213TC-215TC	25½	2 <sup>7</sup> / <sub>8</sub>	36¾	36¾	18¾													
15-18	08	08	182T-184T	19	19½	26 <sup>7</sup> / <sub>8</sub>	44	182TC-184TC	24¼	3 <sup>3</sup> / <sub>8</sub>	20 <sup>1</sup> / <sub>8</sub>	34½	4½	14 <sup>1</sup> / <sub>8</sub>	16½	8 <sup>7</sup> / <sub>8</sub>	9 <sup>1</sup> / <sub>8</sub>	9 <sup>3</sup> / <sub>4</sub>	10				
			213T-215T	19¾			46 <sup>5</sup> / <sub>8</sub>	213TC-215TC	25½						2 <sup>7</sup> / <sub>8</sub>					36¾	36¾	18¾	
19-22	03	05	143T-145T	23	23¾	24	38½	182TC-184TC	20%	3%	18 <sup>7</sup> / <sub>16</sub>	31 <sup>5</sup> / <sub>16</sub>	21 <sup>3</sup> / <sub>16</sub>	15	10 <sup>7</sup> / <sub>8</sub>	10 <sup>7</sup> / <sub>8</sub>	11 <sup>3</sup> / <sub>4</sub>	11 <sup>3</sup> / <sub>4</sub>					
			182T-184T	24			41¾							32 <sup>13</sup> / <sub>16</sub>					16½				
			213T-215T	24¾			43¾							213TC-215TC					22½	2 <sup>7</sup> / <sub>8</sub>	35 <sup>1</sup> / <sub>16</sub>	18¾	
	04	06	143T-145T	23		25	39½	182TC-184TC	22%	3%	18 <sup>15</sup> / <sub>16</sub>	31 <sup>13</sup> / <sub>16</sub>	35 <sup>1</sup> / <sub>16</sub>	14 <sup>1</sup> / <sub>8</sub>					15				
			182T-184T	24			42¾												33 <sup>5</sup> / <sub>16</sub>	16½			
			213T-215T	24¾			44¾												213TC-215TC	23½	2 <sup>7</sup> / <sub>8</sub>	35 <sup>9</sup> / <sub>16</sub>	18¾
	06	06	143T-145T	23		25	39½	182TC-184TC	22%	3%	18 <sup>15</sup> / <sub>16</sub>	31 <sup>13</sup> / <sub>16</sub>	35 <sup>1</sup> / <sub>16</sub>	14 <sup>1</sup> / <sub>8</sub>					15				
			182T-184T	24			42¾												33 <sup>5</sup> / <sub>16</sub>	16½			
			213T-215T	24¾			44¾												213TC-215TC	23½	2 <sup>7</sup> / <sub>8</sub>	35 <sup>9</sup> / <sub>16</sub>	18¾
	08	08	182T-184T	24		26 <sup>7</sup> / <sub>8</sub>	44	182TC-184TC	24¼	3 <sup>3</sup> / <sub>8</sub>	20 <sup>1</sup> / <sub>8</sub>	34½	4½	14 <sup>1</sup> / <sub>8</sub>					16½				
			213T-215T	24¾			46 <sup>5</sup> / <sub>8</sub>	213TC-215TC	25½										2 <sup>7</sup> / <sub>8</sub>	36¾	36¾	18¾	
			254T-256T	26			32¼	51¾	254TC-256TC										26½	2 <sup>7</sup> / <sub>8</sub>	25½	42 <sup>1</sup> / <sub>8</sub>	19½
	10	10	213T-215T	24¾		26 <sup>7</sup> / <sub>8</sub>	46 <sup>5</sup> / <sub>8</sub>	213TC-215TC	25½	2 <sup>7</sup> / <sub>8</sub>	20 <sup>1</sup> / <sub>8</sub>	36¾	4½	14 <sup>1</sup> / <sub>8</sub>					18¾				
			254T-256T	26			32¼	51¾	254TC-256TC										26½	25½	42 <sup>1</sup> / <sub>8</sub>	19½	24½
			284TS-286TS	26¾			32¼	53¾	284TCS-286TCS										33¾	42 <sup>7</sup> / <sub>8</sub>	42 <sup>7</sup> / <sub>8</sub>	24 <sup>1</sup> / <sub>8</sub>	24 <sup>7</sup> / <sub>8</sub>
	12	12	254T-256T	26		33¼	52¾	254TS-256TS	27½	2 <sup>7</sup> / <sub>8</sub>	26	42 <sup>5</sup> / <sub>8</sub>	5	19½					24½				
			284TS-286TS	26¾			54¾	284TSC-286TSC	34¾										43¾	24 <sup>7</sup> / <sub>8</sub>			
			324TS-326TS	29¼			37¼	57 <sup>7</sup> / <sub>8</sub>	324TSC-326TSC										36¾	30	46¾	23½	27 <sup>7</sup> / <sub>8</sub>
23-26	03	05	182T-184T	24	26¾	25½	42¾	182TC-184TC	22½	3 <sup>7</sup> / <sub>8</sub>	18 <sup>13</sup> / <sub>16</sub>	33 <sup>11</sup> / <sub>16</sub>	3 <sup>3</sup> / <sub>16</sub>	17	10 <sup>7</sup> / <sub>8</sub>	10 <sup>7</sup> / <sub>8</sub>	11 <sup>3</sup> / <sub>4</sub>	11 <sup>3</sup> / <sub>4</sub>					
			213T-215T	24¾			45¾	213TC-215TC	N/A					35 <sup>15</sup> / <sub>16</sub>					19¼				
			254T-256T	26			30½	50¾	254TC-256TC					N/A					24 <sup>3</sup> / <sub>16</sub>	41 <sup>5</sup> / <sub>16</sub>	19½	24 <sup>5</sup> / <sub>8</sub>	
	04	06	182T-184T	24		26½	44¾	182TC-184TC	23 <sup>7</sup> / <sub>8</sub>	3 <sup>7</sup> / <sub>8</sub>	19½	34¾	3 <sup>7</sup> / <sub>8</sub>	14 <sup>1</sup> / <sub>8</sub>					17				
			213T-215T	24¾			46¾	213TC-215TC	N/A										36 <sup>5</sup> / <sub>8</sub>	19¼			
			254T-256T	26			31 <sup>7</sup> / <sub>8</sub>	51½	254TC-256TC										N/A	24 <sup>7</sup> / <sub>8</sub>	42	19½	24 <sup>5</sup> / <sub>8</sub>
	06	08	182T-184T	24		26½	44¾	182TC-184TC	23 <sup>7</sup> / <sub>8</sub>	3 <sup>7</sup> / <sub>8</sub>	19½	34¾	3 <sup>7</sup> / <sub>8</sub>	14 <sup>1</sup> / <sub>8</sub>					17				
			213T-215T	24¾			46¾	213TC-215TC	25½										36 <sup>5</sup> / <sub>8</sub>	19¼			
			254T-256T	26			31 <sup>7</sup> / <sub>8</sub>	51½	254TC-256TC										26¼	24 <sup>7</sup> / <sub>8</sub>	42	19½	24 <sup>5</sup> / <sub>8</sub>
	08	08	182T-184T	24		26½	46¾	213TC-215TC	25½	3 <sup>1</sup> / <sub>4</sub>	19½	36 <sup>5</sup> / <sub>8</sub>	3 <sup>7</sup> / <sub>8</sub>	14 <sup>1</sup> / <sub>8</sub>					19¼				
			254T-256T	26			31 <sup>7</sup> / <sub>8</sub>	51½	254TC-256TC										26¼	24 <sup>7</sup> / <sub>8</sub>	42	19½	24 <sup>5</sup> / <sub>8</sub>
			284TS-286TS	26¾			31 <sup>7</sup> / <sub>8</sub>	53½	284TS-286TS										33	24 <sup>7</sup> / <sub>8</sub>	42¾	19½	25 <sup>3</sup> / <sub>8</sub>
10	10	254T-256T	26	33¼	52 <sup>7</sup> / <sub>8</sub>	254TC-256TC	27½	3 <sup>1</sup> / <sub>4</sub>	26	43 <sup>1</sup> / <sub>8</sub>	5	19½	24 <sup>5</sup> / <sub>8</sub>										
		284TS-286TS	26¾		54 <sup>7</sup> / <sub>8</sub>	284TCS-286TCS	34¾						43 <sup>7</sup> / <sub>8</sub>	25 <sup>3</sup> / <sub>8</sub>									
		324TS-326TS	29¼		37¼	58¾	324TCS-326TCS						36¾	30	46¾	23½	27 <sup>7</sup> / <sub>8</sub>						
12	12	284TS-286TS	28¼	37¼	54 <sup>7</sup> / <sub>8</sub>	284TCS-286TCS	34¾	3 <sup>1</sup> / <sub>4</sub>	30	43 <sup>7</sup> / <sub>8</sub>	5	23½	25 <sup>3</sup> / <sub>8</sub>										
		324TS-326TS	29¼		58¾	324TCS-326TCS	36¾						43 <sup>3</sup> / <sub>8</sub>	27 <sup>7</sup> / <sub>8</sub>									

N/A = Not Available

Tolerance: ± 1/8"

\* Dimensions may vary slightly depending on motor manufacturer. Given "H" dimensions were based on the larger of those motors most frequently used by **nyb**. † On fan Sizes 23-26 with Size 12 outlet and Bottom Horizontal discharge, the flange extends 1/2" below the floorline.

The New York Blower Company has a policy of continuous product development and reserves the right to change designs and specifications without notice.

# ARRANGEMENTS 1, 9, 10

Dimensions not to be used for construction unless certified. Note: See page 12 for dimensional drawings.

## ARRANGEMENTS 1, 9, & 10 DIMENSIONS [INCHES]

Wheel dia.	Outlet Size	Inlet flange	A†		H		K		N		R		S		T		U		V
			Arr. 1	Arr. 10	Arr. 1	Arr. 10	Arr. 1/9	Arr. 10	Arr. 1	Arr. 10	Arr. 1/9	Arr. 10	Arr. 1	Arr. 10	Arr. 1/9	Arr. 10	Arr. 1/9	Arr. 10	Arr. 10
14-18	03	05	19½	21	24⅝	30⅛	3	3½	15⅛	22	21⅜	37/8	12¼	17¾	9⅛	9¾	10	10¼	8¼
	04	06			25⅝	31⅛					35/16	4¾							
	06	08			28	33½					4½	5½							
15-18	08	08	23⅝	27⅝	26⅛	35⅛	4	4½	15⅛	26	21⅜	45/8	12¼	197/8	107/8	12¼	11¾	13	11
	03	05			27⅛	36⅛					35/16	5⅛							
	04	06			27	36					4½	6¼							
	06	06			29	38					5	6¾							
	08	08			30	39					33/16	4¼							
19-22	03	05	26⅝	277/8	28¼	36¼	5	4½	15⅛	26	37/8	55/8	12¼	197/8	107/8	12¼	11¾	13	11
	04	06			29⅝	37⅝					37/8	55/8							
	06	08			31	39					5	6¾							
	08	08																	
	10	10																	
23-26	03	05	26⅝	277/8	28¼	36¼	5	4½	15⅛	26	37/8	55/8	12¼	197/8	107/8	12¼	11¾	13	11
	04	06			29⅝	37⅝					37/8	55/8							
	06	08			31	39					5	6¾							
	08	08																	
	10	10																	

† On fan sizes 12, outlet and Bottom Horizontal discharge, the flange extends ½" below the floorline.

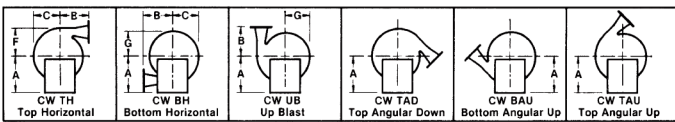
Tolerance: ± 1/8"

## ARRANGEMENT 9 DIMENSIONS [INCHES]

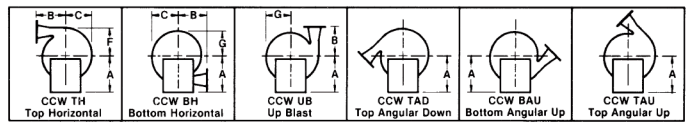
Fan Size	Outlet Size	Pedestal Number	H	Fan Size	Outlet Size	Pedestal Number	H	Fan Size	Pedestal Number	Max. C-NW	Max. Frame Size	A	N	S						
14-18	03	1	24⅝	19-22	08,10	5	29	23-26	04,06,08	326T	235/8	23½	15⅛	12¼						
		2	28¾			6	32¾								17¾	187/8	16			
		3	32⅛			7	36½											21⅛	225/8	19¾
		4	35¼			8	395/8								24¼	253/4	227/8			
	04	1	25⅝			12	5											30	326T	265/8
		2	293/8				6								33¾	27¾	247/8			
		3	33⅛				7		37½	28¼	29¾									
		4	36¼				8		405/8			281/4	305/8							
	06,08	1	28		03	9	425/8		326T	305/8	305/8			225/8	19¾					
		2	31¾			10	35¾					253/4	227/8							
		3	35½			11	387/8									27¾	247/8			
		4	385/8			12	407/8					281/4	29¾							
19-22	03	5	26⅛	10,12	10	37⅛	365T	305/8	305/8	225/8	19¾									
		6	297/8		11	40¼						253/4	227/8							
		7	335/8		12	42¼								27¾	247/8					
	8	36¾	13		427/8	281/4						29¾								
	9	38¾	10		38½								281/4	29¾						
	5	27⅛	11		415/8	281/4						29¾								
	6	307/8	12		435/8								281/4	29¾						
	7	345/8	13		455/8	281/4						29¾								
	8	37¾																		
9	39¾																			

Tolerance: ± 1/8"

## FAN DISCHARGES – VIEWED FROM DRIVE SIDE



Clockwise—angular discharges at 45°



Counterclockwise—angular discharges at 45°

Housings are reversible and rotatable in 22½° increments except Down Blast and Bottom Angular Down which require special construction. Arrangement 10 fans Sizes 19-22 are not rotatable in the field.

The New York Blower Company has a policy of continuous product development and reserves the right to change designs and specifications without notice.