

MATERIAL SPECIFICATIONS

Dimensions in inches. Weights in pounds. WR² in lb.-ft.². Tolerance: ±1/8"

Size	No. of blades	Wheel weight	Wheel WR ²	Bushing type	Shaft diameter	Bearings	Approximate bare fan weight						Housing gauge
							9-M	9-R	9-S, 9-V, 9-D	4-M	4-R	4-S, 4-V, 4-D	
125	6	10.3	0.8	P1	1 3/16	B	114	250	117	—	—	—	10
145	6	11.3	1.3	P1	1 3/16	B	123	264	125	—	—	—	10
165	6	13.3	3.0	P1	1 7/16	D	185	361	179	—	—	—	10
185	9	14.3	4.0	P1	1 7/16	D	196	382	190	119	280	112	10
215	9	15.0	5.0	P1	1 7/16	D	218	422	209	144	310	135	10
245	9	25.3	13	P1	1 7/16	F	305	554	291	198	399	184	10
275	9	27.3	19	P1	1 7/16	F	349	642	333	222	462	205	10
325	9	59.5	46	Q1	1 15/16	F	491	879	470	295	620	274	10
365	9	63.5	67	Q1	1 15/16	F	535	958	509	339	690	313	10
425	9	121.5	150	Q1	2 3/16	F	724	1243	687	449	872	411	10
485	9	128.5	212	Q1	2 3/16	F	788	1371	747	507	988	466	10
545	9	233.5	800	R1	2 7/16	F	1113	1965	1064	735	1467	685	7
605	9	242.5	1000	R1	2 7/16	F	1187	2133	1133	809	1627	755	7

Bearing types: B-Dodge D-Lok F-DL D-Dodge D-Lok F-DLM F-Link-Belt 22400 Series. Sizes 12-36:Flange bearings; Sizes 42-60:pillow-block
nyb reserves the right to substitute bearings of equal quality. Wheel weight includes bushing.

MOTOR SIZE CAPABILITY

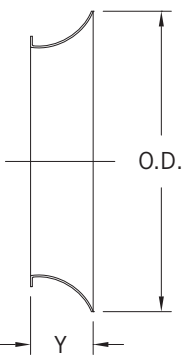
Size	Arrangement 9		Arrangement 4	
	Maximum C-[N-W]	Maximum frame size	Maximum C-[N-W]	Maximum frame size
125	13	182T	—	—
145	13	184T	—	—
165	20 3/4	215T	—	—
185	20 3/4	254T	25 1/4	215T
215	20 3/4	256T	25 1/4	215T
245	23	256T	30 1/2	125T
275	25 3/4	286T	30 1/2	256T
325	27	364T	31	215T
365	27	365T	31	286T
425	27 3/4	365T	32 3/8	326T
485	27 3/4	365T	32 3/8	365T
545	30 3/4*	365T	41 3/8	365T
605	30 3/4*	365T	41 3/8	365T


Arrangement 9 maximums are with or without weather cover. *Longer motors will extend beyond fan inlet; weather covers not available.

FAN FLANGE DIMENSIONS

Size	Flange gauge	Fan ID	Bolting circle			Flange OD	Flange holes*	
			Min.	Center	Max.		No.	Size†
125	10	12 1/4	—	14	—	14 3/4	8	7/16
145	10	14 1/4	—	16	—	16 3/4	8	7/16
165	10	16 1/4	—	18	—	18 3/4	8	7/16
185	10	18 1/4	19 5/8	20	20 3/8	21 1/4	8	7/16 x 13/16
215	10	21 1/4	22 5/8	23	23 3/8	24 1/4	8	7/16 x 13/16
245	10	24 3/8	25 3/4	26 1/8	26 1/2	27 3/8	8	7/16 x 13/16
275	10	27 3/8	28 3/4	29 1/8	29 1/2	30 3/8	8	7/16 x 13/16
325	10	32 1/2	33 7/8	34 1/4	34 5/8	35 1/2	16	7/16 x 13/16
365	10	36 1/2	38	38 3/8	38 3/4	40 1/2	16	7/16 x 13/16
425	10	42 3/4	45	45	45 5/8	47 1/8	16	9/16 x 1
485	10	48 3/4	50 3/4	51	51 5/8	53 1/8	16	9/16 x 1
545	7	55	57	57 3/8	57 7/8	59 1/2	16	9/16 x 1
605	7	61	63	63 3/8	63 7/8	65 1/2	16	9/16 x 1

*Holes spaced equally, straddling centerline. †Sizes 18-60 have slotted holes.

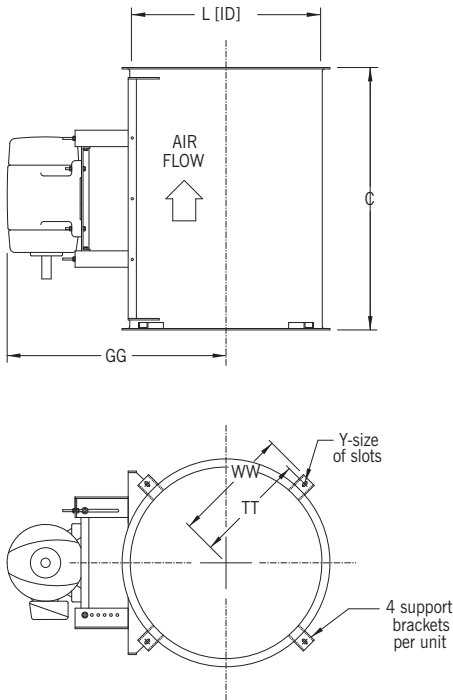
INLET BELL DIMENSIONS	Size	Y	O.D.
		125	2 1/8
	145	2 1/2	19
	165	3	21 3/4
	185	3 1/4	24 1/4
	215	3 3/4	28 1/4
	245	4 1/8	32 1/8
	275	4 3/4	36 3/8
	325	5 3/4	43 1/2
	365	6 1/4	48 1/2
	425	7 1/4	56 3/4
	485	8 1/4	64 3/4
	545	9 1/4	73
	605	10 1/4	81

INLET VANE DAMPER DIMENSIONS	Size	X
		125
	145	9
	165	9
	185	9
	215	9
	245	9
	275	9
	325	9
	365	9
	425	10
	485	10
	545	10
	605	10

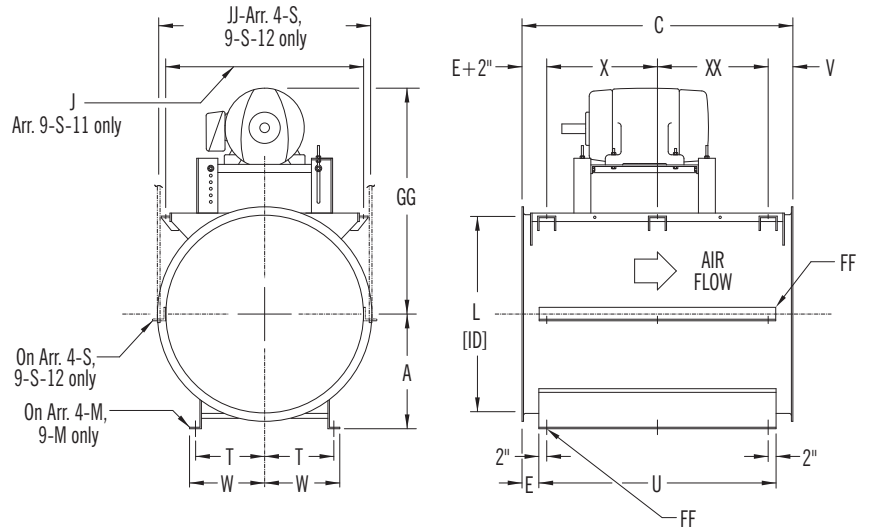
DIMENSIONS

Dimensions should not be used for construction unless certified. See page 6 for available mounting positions. Note motor size capability on page 14. Tolerance: $\pm 1/8"$.

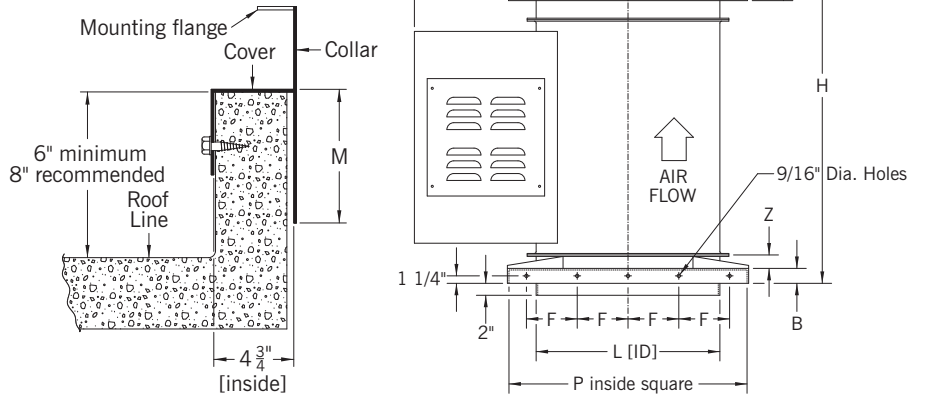
ARRANGEMENTS 4-V AND 9-V



ARRANGEMENTS 4-M AND 9-M, 4-S AND 9-S, 4-D AND 9-D



ARRANGEMENTS 4-R AND 9-R [roof-mounted] with exhaust-type stack hood.



DIMENSIONS [INCHES]

Size	A	B	C	E	F	FF*	G	GG [max.]	H	J	JJ	L	M	P	R	S	T	TT	U	V	W	WW	Y
125	8 ³ / ₄	2 ¹ / ₂	25	3 ¹ / ₄	4 ¹ / ₂	9 ¹ / ₁₆	25 ¹ / ₄	23 ⁵ / ₈	46 ³ / ₄	19 ⁵ / ₈	14 ¹ / ₄	12 ¹ / ₄	4 ¹ / ₂	22	14	17 ¹ / ₄	4 ¹ / ₂	9 ³ / ₈	18 ¹ / ₂	4 ¹ / ₄	5 ¹ / ₂	10 ⁵ / ₈	9 ¹ / ₁₆ x1
145	9 ³ / ₄	2 ¹ / ₂	25	3 ¹ / ₄	4 ¹ / ₂	9 ¹ / ₁₆	26 ¹ / ₄	26	47 ³ / ₄	19 ⁵ / ₈	16 ¹ / ₄	14 ¹ / ₄	4 ¹ / ₂	24	15	19 ¹ / ₄	5 ¹ / ₂	10 ³ / ₈	18 ¹ / ₂	4 ¹ / ₄	6 ¹ / ₂	11 ⁵ / ₈	9 ¹ / ₁₆ x1
165	11 ¹ / ₄	2 ¹ / ₂	32	3 ¹ / ₄	5	9 ¹ / ₁₆	27 ¹ / ₄	27	55 ³ / ₄	19 ⁵ / ₈	18 ³ / ₄	16 ¹ / ₄	4 ¹ / ₂	26 ¹ / ₈	16	21 ¹ / ₄	6 ¹ / ₄	11 ³ / ₈	25 ¹ / ₂	11 ¹ / ₄	7 ¹ / ₂	12 ⁵ / ₈	9 ¹ / ₁₆ x1
185	12 ¹ / ₂	2 ¹ / ₂	32	3 ¹ / ₄	5 ¹ / ₂	9 ¹ / ₁₆	28 ¹ / ₂	28	57 ³ / ₄	19 ⁵ / ₈	20 ³ / ₄	18 ¹ / ₄	4 ¹ / ₂	28 ¹ / ₈	18	23 ¹ / ₄	6 ³ / ₄	12 ³ / ₈	25 ¹ / ₂	11 ¹ / ₄	8	13 ⁵ / ₈	9 ¹ / ₁₆ x1
215	14 ¹ / ₂	2 ¹ / ₂	32	3 ¹ / ₄	6	9 ¹ / ₁₆	29 ³ / ₄	29 ¹ / ₂	60 ³ / ₄	19 ⁵ / ₈	23 ³ / ₄	21 ¹ / ₄	4 ¹ / ₂	31 ¹ / ₈	21	26 ¹ / ₄	7 ⁷ / ₈	13 ⁷ / ₈	25 ¹ / ₂	11 ¹ / ₄	9 ¹ / ₈	15 ¹ / ₈	9 ¹ / ₁₆ x1
245	16 ¹ / ₂	2 ¹ / ₂	38	3 ¹ / ₄	7	9 ¹ / ₁₆	37 ³ / ₄	36 ¹ / ₈	73 ³ / ₄	24 ⁷ / ₈	28 ¹ / ₈	24 ³ / ₈	4 ¹ / ₂	34 ¹ / ₄	23	29 ³ / ₈	9	15 ¹ / ₂	31 ¹ / ₂	9 ¹ / ₂	10 ¹ / ₄	16 ³ / ₄	9 ¹ / ₁₆ x1
275	19	2 ¹ / ₂	38	3 ¹ / ₄	8	9 ¹ / ₁₆	39 ¹ / ₄	37 ⁵ / ₈	75 ³ / ₄	24 ⁷ / ₈	31 ¹ / ₈	27 ³ / ₈	4 ¹ / ₂	37 ¹ / ₄	25	32 ³ / ₈	10 ¹ / ₄	17	31 ¹ / ₂	9 ¹ / ₂	11 ¹ / ₂	18 ¹ / ₄	9 ¹ / ₁₆ x1
325	22 ¹ / ₄	3	40	4 ¹ / ₄	9	9 ¹ / ₁₆	41 ³ / ₄	40 ¹ / ₄	80 ¹ / ₄	24 ⁷ / ₈	36 ¹ / ₄	32 ¹ / ₂	5	41 ³ / ₄	26	37 ¹ / ₄	11 ³ / ₄	20 ³ / ₈	31 ¹ / ₂	11 ¹ / ₂	13 ¹ / ₄	21 ⁷ / ₈	3 ⁴ / ₁₆ x1 ¹ / ₂
365	24 ³ / ₄	3	40	4 ¹ / ₄	10 ¹ / ₂	9 ¹ / ₁₆	43 ³ / ₄	42 ¹ / ₄	85 ¹ / ₄	24 ⁷ / ₈	40 ¹ / ₄	36 ¹ / ₂	5	46 ³ / ₈	31	41 ¹ / ₂	13 ¹ / ₂	22 ³ / ₈	31 ¹ / ₂	11 ¹ / ₂	15	23 ⁷ / ₈	3 ⁴ / ₁₆ x1 ¹ / ₂
425	28 ³ / ₄	3	43	4 ¹ / ₄	12	3 ⁴ / ₁₆	51	47 ⁵ / ₈	91 ¹ / ₄	43	46 ¹ / ₂	42 ³ / ₄	5	52 ⁵ / ₈	34	47 ³ / ₄	15	25 ¹ / ₂	34 ¹ / ₂	4 ¹ / ₂	16 ¹ / ₂	27	3 ⁴ / ₁₆ x1 ¹ / ₂
485	32 ³ / ₄	3	43	4 ¹ / ₄	13	3 ⁴ / ₁₆	54	50 ⁵ / ₈	97 ¹ / ₄	43	52 ¹ / ₂	48 ³ / ₄	5	58 ⁵ / ₈	40	53 ³ / ₄	16 ³ / ₄	28 ¹ / ₂	34 ¹ / ₂	4 ¹ / ₂	18 ¹ / ₄	30	3 ⁴ / ₁₆ x1 ¹ / ₂
545	37	3	47	4 ¹ / ₄	14	3 ⁴ / ₁₆	59 ¹ / ₄	53 ³ / ₄	104 ¹ / ₄	45 ³ / ₄	59 ⁷ / ₈	55	5	64 ⁷ / ₈	43	60	18 ³ / ₄	32 ¹ / ₄	38 ¹ / ₂	5 ¹ / ₄	20 ¹ / ₄	33 ³ / ₄	1x2
605	41	3	47	4 ¹ / ₄	14 ¹ / ₂	3 ⁴ / ₁₆	62 ¹ / ₄	56 ³ / ₄	108 ¹ / ₄	45 ³ / ₄	65 ⁷ / ₈	61	5	70 ⁷ / ₈	47	66	20 ³ / ₄	35 ¹ / ₄	38 ¹ / ₂	5 ¹ / ₄	22 ¹ / ₄	36 ³ / ₄	1x2

*FF: Mounting hole size; Sizes 125-485 use two holes per side; Sizes 545 and 605 use three holes per side.

Dimensions X and XX pertain to Sizes 545 and 605 only: X = 17¹/_{4"}, XX = 18¹/_{4"}. Z = 2" on Sizes 125-225, 3" on Sizes 325-605.

The New York Blower Company has a policy of continual product improvement and reserves the right to change designs and specifications without notice.