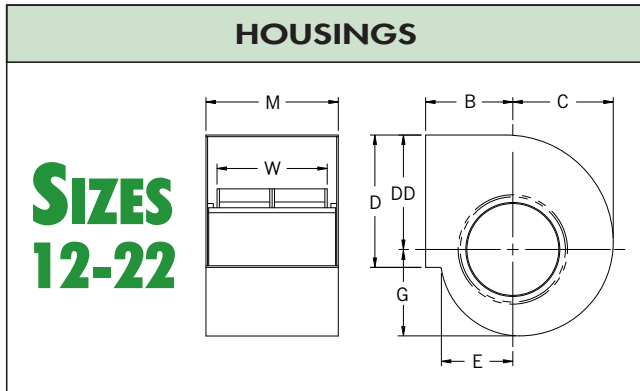
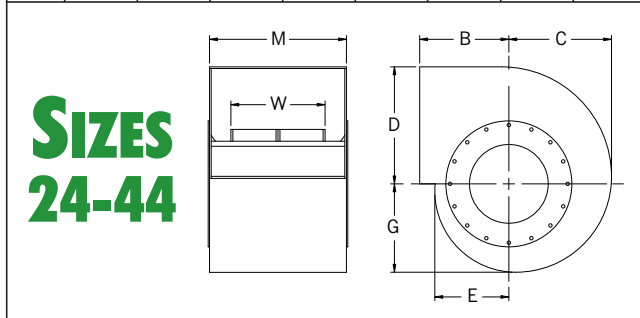


# DRAWINGS/DIMENSIONS [INCHES] Not to be used for construction unless certified.

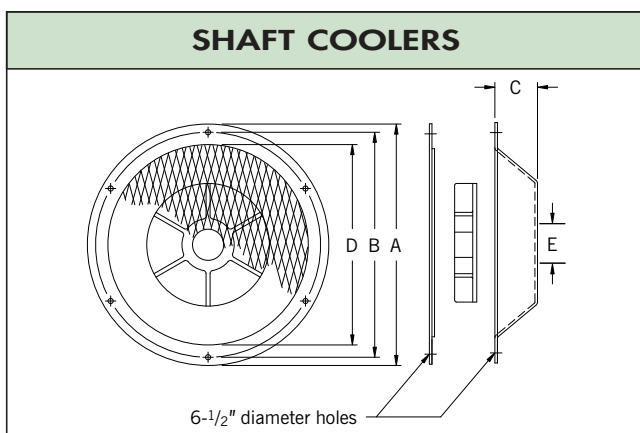


Size	B	C	D	DD	E	G	M	W
12	11 1/2	10 1/8	15	12 1/2	7 1/4	8 7/8	15	12 1/4
15	13 1/2	12 7/8	17	15 1/8	9 1/4	11 1/8	17	15
18	14	16 1/4	21 1/2	18 1/2	11 1/2	13 7/8	21 1/2	18 1/4
22	18 1/2	19 5/8	25 1/4	22 1/2	14 1/8	16 7/8	28 1/2	24 1/2



Size	B	C	D	E	G	M	W	Stud circle
24	18 3/4	21 3/4	25	15 1/2	18 5/8	36	26 7/8	29 1/8
27	20 3/4	24	27 1/2	17 1/4	20 5/8	39 3/4	29 5/8	31 3/4
30	23	26 5/8	30 1/2	19 1/8	22 7/8	44	33	35 1/8
33	25 1/2	29 1/2	33 3/4	21 1/4	25 3/8	48 3/8	36 1/4	38 3/8
36	28 1/4	32 5/8	37 3/8	23 5/8	28 1/8	53 1/2	39 7/8	42 3/8
40	31 1/8	36	41 1/8	26	31	59	43 7/8	46 1/8
44	34 3/8	39 3/4	45 1/2	28 3/4	34 1/4	65 1/4	48 5/8	51 1/8

Tolerance: ± 1/8"

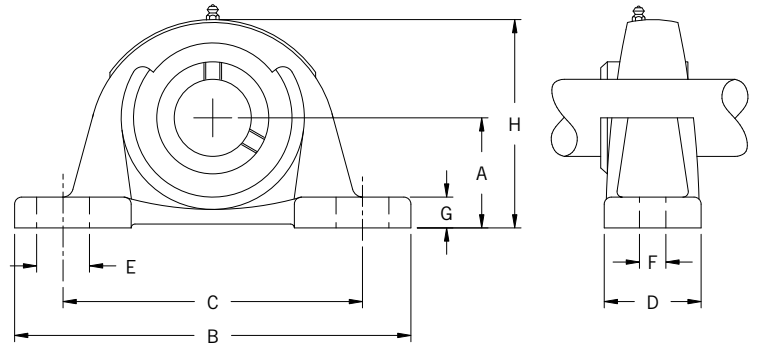


Bore*	A	B	C	D	E
1 - 2 3/16	14	12 3/4	2 1/4	11	2 3/4
27/16 - 2 15/16	18 3/8	17 1/8	3 1/8	15 1/4	3 3/4
37/16 - 3 15/16	23 1/8	21 7/8	3 1/2	20	4 1/2
47/16 - 5 7/16	25 5/8	24 3/8	3 3/4	22 1/2	5 1/2

\* Shaft-cooler bore should be same as wheel bore.

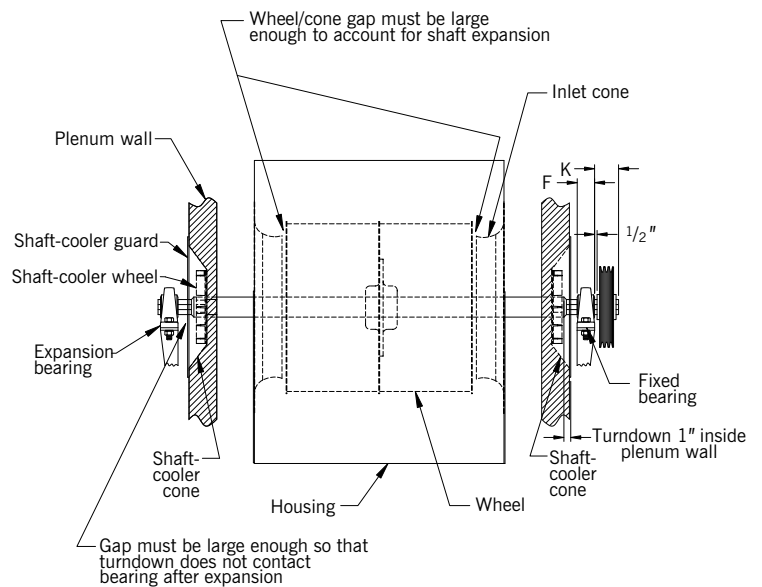
Tolerance: ± 1/8"

## BEARINGS



Shaft size	Bearing type	A	B	C	D	E	F	G	H
17/16	SPM	2 3/8	8 1/4	6 1/4	2 1/4	1 1/4	3/4	3/4	4 1/2
1 11/16	SPM	2 3/8	8 3/4	6 1/2	2 3/8	1 1/4	3/4	3/4	4 5/8
2 3/16	SPM	3 1/8	11 1/4	8 1/2	2 3/4	1 1/2	3/4	7/8	5 15/16
2 7/16	SPM	3 1/8	11 1/2	8 5/8	3	1 1/2	7/8	7/8	6 1/16
2 11/16	MPD	3 1/2	13	9	3 1/2	2	15/16	1 1/8	7
2 15/16	MPD	3 1/2	13	9	3 1/2	2	15/16	1 1/4	7 1/4

## TYPICAL BEARING MOUNTING DETAIL



Optional preselected bearings are available with **nyb** Air Kits. However, it is recognized that some customers may have bearing specifications other than available through **nyb**. The detail shown here provides dimension information and a suitable method of construction.

The F dimensions for Standard Air Kits are given in Chart VII, page 10.

F = Nominal width of bearing bar.

K = Shaft extension for drive is based on placing sheave as close to bearing bar as possible. Speeds in Chart VII and on curves pages 11-14 are based on 1/2" maximum.